



# Mission Hospitals 2025

[m3missions.com](http://m3missions.com)

Central & South  
America  
&  
The Caribbean



**WORLD MEDICAL MISSION®**  
THE MEDICAL MINISTRY OF SAMARITAN'S PURSE



## **Shalom Family Medical Center** **Santiago Texacuangos, El Salvador**

***Mission:*** Harvesting In Spanish

***Staffing Needs:*** Cardiology, Dentistry, Dermatology, Family Medicine, Emergency Medicine, Endocrinology, Family Medicine, Internal Medicine, Obstetrician/Gynecology, Otolaryngology, Pediatrics, Radiology

***Language Requirement:*** Must be able to communicate independently in Spanish.

***Location:*** Shalom Family Medical Center is located in Santiago Texacuangos, approximately 10 miles southeast of the international airport in San Salvador.

***Religion:*** The majority of the population in El Salvador is Christian, with Roman Catholics and Protestants being the two major denominations. The number of evangelicals in the country is growing rapidly.

***Profile:*** Maua Methodist Hospital houses approximately 200 beds with departments including Emergency, Maternity, Surgical, Pediatrics and in-patient wards, both men and women. Other services include physical therapy, dentistry, laboratory, ultrasound and Radiology, which includes a C-arm in the surgical theatre.

You may find World Medical Mission Personnel at their booth, or you may contact:

**WMM Placement Coordinator: Sandy Souto – [SSouto@Samaritan.org](mailto:SSouto@Samaritan.org)**



**WORLD MEDICAL MISSION®**  
THE MEDICAL MINISTRY OF SAMARITAN'S PURSE



## **Hospital Shalom** **San Benito, Peten, Guatemala**

***Mission:*** New Covenant World Missions

***Staffing Needs:*** Anesthesiology, Cardiology, Emergency Medicine, Endocrinology, Gastroenterology, General Surgery, Nephrology, Neurology, Obstetrics/Gynecology, Orthopedic Surgery, Otolaryngology, Pediatrics, Pediatric Surgery, Physical Medicine and Rehabilitation, Pulmonology

***Location:*** Hospital Shalom is located 350 miles north of Guatemala City, in the region of Peten, approximately 60 miles from the Tikal ruins. This area is considered to be part of the Rain Forest.

***Religion:*** The Roman Catholic Church prevails as the dominant church figure, followed by Evangelical Protestants and other religions including Judaism, Islam and Buddhism.

***Profile:*** Hospital Shalom is a full-service hospital is open continuously for surgeries, in-patient medical and emergencies. It is a 22-bed facility that hosts out-patient clinics during clinic hours on the weekdays and half days on Saturdays. Diagnostic equipment is available in the form of an ultrasound machine, two x-ray units and an in-house lab and pharmacy.

You may find World Medical Mission Personnel at their booth, or you may contact:

**WMM Placement Coordinator: Sandy Souto – [SSouto@Samaritan.org](mailto:SSouto@Samaritan.org)**



## Bringing the LUV of Jesus through providing healthcare in Haiti and Honduras

### About Us

We exist to bring the LUV of Jesus to orphans around the world by providing their six basic needs: clean water, proper food, **healthcare**, education, job skills, and a Christ-centered loving home.

We are a nondenominational organization that welcomes anyone and everyone willing to follow the command of scripture in Isaiah 1:17 to "Defend the Orphan."

### Current Opportunities

We are constructing and will soon open our Special Needs Village in Haiti, which will be a forever home for the young adults in our care who cannot live independently. Once open, we will have capacity for 16 young adults and 25 staff. This project is intentionally supporting the local economy. If you would like to play a part in furnishing and staffing a lifelong home for these young adults, visit [coreluv.org/donate](https://coreluv.org/donate)

### Future Vision

**Special Needs Village** — Once our Special Needs Village opens, we will have space to rescue more orphans with special needs. To give excellent care for the lives of these children, we need additional sustaining monthly support. Learn more at [coreluv.org/defender](https://coreluv.org/defender)

**Honduras Medical Trips** — We are taking mission trips to Honduras! We have been given land to build a children's village, which includes loving homes for orphaned children. Pioneer with us as we begin to determine ongoing medical needs and plan potential medical trips in Cedros, Honduras. If you are interested in helping us map this out and join a trip, please contact us by email at [missions@coreluv.org](mailto:missions@coreluv.org)

**Haiti Medical Trips** — **Due to the current civil unrest, we are not hosting medical trips to Haiti at this time.** We hope to host medical trips in the future at our Myan Healthcare Center, located in the rural village of Myan, 15 minutes outside of Gonaïves, Haiti. Gonaïves is a unique town known as Haiti's "Independence City." It is a 4-hour drive from Port-au-Prince, where the international airport is.

**For more information** on getting involved, please email [info@coreluv.org](mailto:info@coreluv.org) or visit our website at [coreluv.org](https://coreluv.org).



**WORLD MEDICAL MISSION®**  
THE MEDICAL MINISTRY OF SAMARITAN'S PURSE



## **Hospital Loma de Luz** **Belfate, Honduras**

**Mission:** The Cornerstone Foundation is located in Saucier, Mississippi. The ministry is Hospital Loma de Luz in Balfate, Colón, Honduras.

**Staffing Needs:** Anesthesiology, Cardiology, Dentistry, Emergency Medicine, Family Practice, Internal Medicine, Obstetrics/Gynecology, Ophthalmology, Oral Maxillofacial Surgery, Plastic Surgery

**Location:** Loma de Luz means the Hill of The Light. Hospital Loma de Luz is located 37 miles east of La Ceiba and is situated on a hill overlooking the shore of the Caribbean Sea. Due to rough road conditions the drive from La Ceiba to the hospital is approximately 1½ hours.

**Religion:** Although 95% of the population is considered Roman Catholic, it is extremely unlikely that most of these will have read or heard even the most basic precepts of the faith.

**Profile:** In January 2003, Hospital Loma de Luz saw its grand inauguration and has faithfully been serving the rural poor in Honduras ever since. Loma de Luz is a 30,000 square foot, 20 bed modern full-service medical care facility. Working through its Honduran Board of Directors (APAH), Hospital Loma de Luz is a rarity in the small world of Christian mission hospitals.

You may find World Medical Mission Personnel at their booth, or you may contact:

**WMM Placement Coordinator: Sandy Souto – [SSouto@Samaritan.org](mailto:SSouto@Samaritan.org)**





**WORLD MEDICAL MISSION®**  
THE MEDICAL MINISTRY OF SAMARITAN'S PURSE



## **Jungle Hospital – Dyer Rural Hospital** **Rio Viejo, Atlantida, Honduras**

**Mission:** Healing Hands Global, Inc.

**Staffing Needs:** Dentistry, Family Medicine, Obstetrician/Gynecology

**Location:** Hospital Shalom is located in Rio Viejo, approximately 20 km (12 miles) from the coastal city of La Ceiba. The drive is approximately 1 hour along a rural dirt road.

**Religion:** Although 95% of the population is considered Roman Catholic, it is extremely unlikely that most of these will have read or heard even the most basic precepts of the faith.

**Profile:** Jungle Hospital is a small Level II hospital consisting of 10 beds. Currently they have a dedicated Labor and Delivery ward, as well as Surgical and Recovery wards. Since their certification in 2015, they have performed over 35,000 patient consults at the hospital and the surrounding community.

You may find World Medical Mission Personnel at their booth, or you may contact:

**WMM Placement Coordinator: Sandy Souto – [SSouto@Samaritan.org](mailto:SSouto@Samaritan.org)**



**WORLD MEDICAL MISSION®**  
THE MEDICAL MINISTRY OF SAMARITAN'S PURSE



## **Hospital Mision Tarahumara** **Samachique, Chihuahua - Mexico**

***Mission:*** Mexico Medical

***Staffing Needs:*** Anesthesiology, Dentistry, Emergency Medicine, Family Practice, General Surgery, Internal Medicine, Obstetrics/Gynecology, Ophthalmology, Orthopedic Surgery, Pediatrics

***Location:*** Hospital Mision Tarahumara is located in Samachique, Chihuahua, in the heart of the Sierra Madre Mountains. It is situated at approximately 7000 feet above sea level.

***Religion:*** Animism is the prevalent religion

***Profile:*** Hospital Mision Tarahumara is a 25-bed hospital consisting of an outpatient area, dental suite, pharmacy, radiology, pediatric, men's and women's wards, birth center, emergency room and a sophisticated surgical area. Every year an estimated 10,000 patients are treated, 100 infants delivered and 300 surgeries performed. There is also a very active Community Health Evangelism program, which works in remote communities delivering healthcare and agricultural assistance, always interlaced with the Gospel.

You may find World Medical Mission Personnel at their booth, or you may contact:

**WMM Placement Coordinator: Sandy Souto – [SSouto@Samaritan.org](mailto:SSouto@Samaritan.org)**



**Asia**



[www.AshaPartners.org](http://www.AshaPartners.org)



## Mother-Child Hospital and Rural Medical Center

**Mission:** Asha Partners

**Staffing Needs:** Family Practice, Internal Medicine, Pediatrics, Obstetrics/Gynecology, General Surgery, Emergency Medicine, Gastroenterology, Endocrinologist, Hospital Administration

**Location:** Mother Child Hospital is in a suburb of Dhaka (Bangladesh's capital city), the Rural Medical Center is 4 hour journey (car, boat, rickshaw) from the Dhaka Airport

**Religion:** Bangladesh is 88% Muslim, 8% Hindu, .5% Buddhist, .3% Christian and .11% other religions (Wikipedia, 2024)

**Profile:** Asha Partners helps to operate two medical facilities in Bangladesh. The new 43,000sf mother-child hospital offers laboratory services, pharmacology, sonography, multiple exam rooms, radiology, expanding in 2025 to include 2 operating theaters, an ER, Labor & Delivery, in-patient beds, and an ICU/ NICU and a dialysis center. The Rural Medical Center is in a remote area and provides the only access to medical care for a community of 100,000 people (primarily as an outpatient clinic offering patient care, patient education, basic laboratory services, minor surgery and midwifery).

[www.AshaPartners.org](http://www.AshaPartners.org)

You may contact Asha Partners at:  
Dr. Amie – [Amie@AshaPartners.org](mailto:Amie@AshaPartners.org)



## **United Mission Hospital** **Tansen, Palpa, Nepal**

Motto: We Serve, Jesus Heals

Size: 200 beds

Stats (2023-24): 77,311 outpatient visits, 10,577 inpatient admissions, 5,678 operations, 1,505 infant deliveries

Language Spoken: Primarily Nepali. Also Hindi and other tribal languages.

Needs:

Long term healthcare workers: Most urgent needs now are for a Pathologist and a Radiologist. We also need Primary Care General Practitioners (Family Medicine, Internal Medicine, and Pediatrics). OB/GYN, General Surgery, Orthopedics also needed. Other vacancies that are urgent include an IT consultant and a fund raising manager (for both UMN hospitals as we have large infrastructure projects planned for both hospitals),

Short-term: Difficult due to visa issues and work permits but occasionally General Surgery, Ortho, Surgical Sub-specialties.

Other: While providing care for large numbers of underserved and resource-limited patients and their families, a large part of our hospital's work involves training Nepali house officers and residents as well as training of paramedical and nursing staff.

Tansen hospital Expat Coordinator – [umht.eso@umn.org.np](mailto:umht.eso@umn.org.np)  
Personnel Director for UMN – [expatriate.coordinator@umn.org.np](mailto:expatriate.coordinator@umn.org.np)



**WORLD MEDICAL MISSION®**  
THE MEDICAL MINISTRY OF SAMARITAN'S PURSE



## **United Mission Hospital** **Tansen, Nepal**

***Mission:*** United Mission to Nepal

***Staffing Needs:*** Anesthesiology, Emergency Medicine, Family Practice, General Surgery, Internal Medicine, Obstetrics/Gynecology, Orthopedic Surgery, Otolaryngology, Pathology, Pediatric Surgery, Pediatrics, Physical Medicine & Rehab, Urology

***Location:*** The United Mission Hospital Tansen (UMHT) is located in Bhusaaldanda. Tansen, the district headquarters and commercial centre of Palpa District, is a pleasant town built on the side of Shrinagar Hill. It lies in the middle hills of Nepal, at an altitude of 4593 feet, 187 miles west of Kathmandu, 75 miles from Pokhara and 50 miles from Bhairawa on the Indian border.

***Religion:*** The major religion is Hinduism which accounts for about 90% of the population. There is also a significant Tibetan Buddhist population in Nepal. Christianity makes up less than 2% of the population.

***Profile:*** Tansen Mission Hospital serves as a regional hospital and serves an area of over a million, extending into India. The facility now has 165 inpatient beds. The services offered include surgery, paediatrics, general medicine, obstetrics, gynaecology, and dentistry. We also have orthopedic surgeries and there are ultrasound, endoscopy and echo cardiography services. There is also an active government approved post-graduate training program for physicians in both internship and residency programs, in addition to clinical training for nurse anaesthetists and midwives.

You may find World Medical Mission Personnel at their booth, or you may contact:

**WMM Placement Coordinator: Sandy Souto – [SSouto@Samaritan.org](mailto:SSouto@Samaritan.org)**



**WORLD MEDICAL MISSION®**  
THE MEDICAL MINISTRY OF SAMARITAN'S PURSE



## **Nazarene General Hospital** **Papua New Guinea**

***Mission:*** International Church of the Nazarene

***Staffing Needs:*** Emergency Medicine, Family Practice, Gastroenterology, General Surgery, Internal Medicine, Obstetrics/Gynecology, Orthopedic Surgery, Pediatrics, Urology

***Location:*** Kudjip Nazarene Hospital is located in the Waghi Valley of the Jiwaka Province of Papua New Guinea. This region is the broadest and most developed of the highlands.

***Religion:*** Religious beliefs throughout Papua New Guinea are diverse and syncretic as they combine Christian ideas with traditional animistic beliefs.

***Profile:*** Founded in 1967, Kudjip Nazarene Hospital is a 134 bed hospital which provides both inpatient and outpatient care. It is located in the Jiwaka Province of Papua New Guinea (PNG) and functions as both a local primary facility as well as a referral center. The location is rural; the nearest small town is about 15 minutes away, and the nearest significant commercial center is about an hour away. The hospital's purpose is to make Christlike disciples through excellent medical care, both in preventative and curative services.

You may find World Medical Mission Personnel at their booth, or you may contact:

**WMM Placement Coordinator: Abigail Dryden – [ADryden@Samaritan.org](mailto:ADryden@Samaritan.org)**





CURE's Medical Mission Opportunities differ across the network and focus on:

- Specialty Medical Surgeons (orthopedics, plastics)
- Anesthesiology
- RN, PT, OT
- Medical Student Elective Placements
- Resident & Fellow Placements

CURE Hospital locations and specializations are as follows:

- **Orthopedics:** Kenya
- **Orthopedics, Plastics & Reconstructive:** Zambia, Zimbabwe, Philippines, Malawi, Ethiopia, & Niger
- **Neurosurgery:**

Uganda Medical Mission

Opportunities:

- For more information on current volunteer opportunities, [cure.org/volunteer](https://cure.org/volunteer)
- Questions and general inquiries can be sent to [volunteer@cure.org](mailto:volunteer@cure.org)
- For information on current employment opportunities at CURE, visit [cure.org/jobs](https://cure.org/jobs).





## **Kanad Hospital**

### **Al Ain, United Arab Emirates**

Specialty: Women & Children

Needs: OB-Gyns, Pediatricians, Midwives, Registered Nurses (Women's Health services, Pediatrics, NICU)

For **general inquiries**, email [intentional@kanadhospital.org](mailto:intentional@kanadhospital.org).

For information about **vision trips** or **observerships** at Kanad hospital, email [intentional@kanadhospital.org](mailto:intentional@kanadhospital.org).

For information about **employment opportunities** at Kanad Hospital, email [intentional@kanadhospital.org](mailto:intentional@kanadhospital.org) or visit <https://kanadhospital.org/careers/>

# Africa



## **Centro Evangélico de Medicina do Lubango (CEML)** **Lubango, Angola**

CEML is a 55-bed hospital which opened in 2006.

### **The NEED:**

- **Short and long-term faculty members are always needed. They provide training for residents and leave for permanent faculty to get R&R.**
- **Prayers are needed for PAACS residents and staff.**
- **Financial resources are needed to train the residents as surgeons. The cost to train one PAACS resident is on average \$25K per year.**

For additional information, please go to [www.paacs.net](http://www.paacs.net) or you may also contact PAACS Chief Medical Officer for information on short-term and long-term faculty assignments at [keir.thelander@paacs.net](mailto:keir.thelander@paacs.net)



**WORLD MEDICAL MISSION®**  
THE MEDICAL MINISTRY OF SAMARITAN'S PURSE



## **Kibuye Hope Hospital** **Kibuye, Burundi**

**Mission:** Free Methodist Church and Serge

**Staffing Needs:** Anesthesiology, General Surgery, Internal Medicine, Obstetrics/Gynecology, Orthopedic Surgery, Pediatrics

**Location:** Kibuye Hope Hospital is located in the central region of Burundi (Gitega Province) approximately 2 ½ hours from Bujumbura.

**Religion:** Statistics reveal the following about the religious identifications of Burundians: Christianity 87% (62% Catholic, 38% Protestant), Islam 5-10%, & Animism (largely mixed with the other religions).

**Profile:** It is a 110 bed facility (30) surgical, (35) maternity, (35) pediatrics, (10) medicine. Long term expatriate staff include (1) American general surgeon, (1) American family practice doctor, (1) American OB/Gyn, (1) American med/peds physician, (1) American ophthalmologist, and (1) American emergency medicine physician. There are also (6) Burundian general medical doctors.

[www.mccroppers.com](http://www.mccroppers.com)

[kibuyehope.com](http://kibuyehope.com)

You may find World Medical Mission Personnel at their booth, or you may contact:

**WMM Placement Coordinator: Abigail Dryden – [ADryden@Samaritan.org](mailto:ADryden@Samaritan.org)**



## **Kibuye Hope Hospital** **Kibuye, Burundi**

The hospital is currently small, with only 85 beds, but planned development will expand it to 300 beds with life-saving modern technology over the next ten years.

### **The NEED:**

- **Short and long-term faculty members are always needed. They provide training for residents and leave for permanent faculty to get R&R.**
- **Prayers are needed for PAACS residents and staff.**
- **Financial resources are needed to train the residents as surgeons. The cost to train one PAACS resident is on average \$25K per year.**

For additional information, please go to [www.paacs.net](http://www.paacs.net) or you may also contact PAACS Chief Medical Officer for information on short-term and long-term faculty assignments at [keir.thelander@paacs.net](mailto:keir.thelander@paacs.net)



## **Mbingo Baptist Hospital** **Bamenda, Cameroon**

The Hospital began in 1952 as a Leprosy Settlement. In 1965, the General Hospital became an up-shoot of the Leprosy Settlement. The Hospital provides comprehensive health care among which the following services stand out: General nursing, eye surgery, general surgery, orthopaedic surgery, Ear, Nose & Throat (ENT) surgery, surgical and internal medicine residency programs, vocational training and rehabilitation.

### **The NEED:**

- **Short and long-term faculty members are always needed. They provide training for residents and leave for permanent faculty to get R&R.**
- **Prayers are needed for PAACS residents and staff.**
- **Financial resources are needed to train the residents as surgeons. The cost to train one PAACS resident is on average \$25K per year.**

For additional information, please go to [www.paacs.net](http://www.paacs.net) or you may also contact PAACS Chief Medical Officer for information on short-term and long-term faculty assignments at [kier.thelander@paacs.net](mailto:kier.thelander@paacs.net)





**WORLD MEDICAL MISSION®**  
THE MEDICAL MINISTRY OF SAMARITAN'S PURSE



## **Mbingo Baptist Hospital** **Bamenda, Cameroon**

**Mission:** Cameroon Baptist Convention

**Staffing Needs:** Anesthesiology, Cardiology, General Surgery, Internal Medicine, Neurology, Neurosurgery, Obstetrics/Gynecology, Orthopedic Surgery, Pathology, Pediatric Orthopedic Surgery, Pediatric Surgery, Pediatrics, Plastic Surgery, Rheumatology, Urology

**Location:** Mbingo Hospital is located in the Northwest Region of Cameroon. Approximately seven hours (by car) from the city of Douala.

**Religion:** There are several different religions practiced throughout Cameroon, including Christianity, Islam, traditionalism, and Animism. Many people living in the Mbingo area confess to be Christian, but blend traditionalism with Christianity. The Fulani in the area are nearly all Muslim.

**Profile:** Mbingo Baptist Hospital is a 310 bed facility (70) surgical, (40) orthopedics, (30) male medical, (34) female medical, (10) infectious disease/isolation, (20+6 isolation) pediatrics, (22) maternity, (46) Hanson's disease/ulcer ward, (4) semi-private and (8) adult private rooms.

You may find World Medical Mission Personnel at their booth, or you may contact:

**WMM Placement Coordinator: Abigail Dryden – [ADryden@Samaritan.org](mailto:ADryden@Samaritan.org)**



**WORLD MEDICAL MISSION®**  
THE MEDICAL MINISTRY OF SAMARITAN'S PURSE



## **Evangelical Mission Hospital** **Aswan, Egypt**

**Mission:** Sponsored by the Evangeliumsgemeinschaft Mittlerer Osten (EMO)

**Staffing Needs:** Family Medicine, Internal Medicine, Emergency Medicine

**Location:** Evangelical Mission Hospital is located in Aswan, Egypt, and is in the southern part of Egypt 621 miles from Cairo and 186 miles from North Sudan.

**Religion:** Egypt is a Muslim country with strict rules about preaching the Gospel. Patients at the hospital who identify themselves as Christians (evangelical or orthodox) may be engaged in religious conversation at any time. Muslims may only be given answers to their direct questions.

**Profile:** Evangelical Mission Hospital is a 72 -bed facility offering a wide range of services including care for the chronically ill patients, surgery, pediatrics, OB/GYN, urology, ophthalmology, obstetrics, and laboratory. There is a family practice residency program and a surgical training program.

You may find World Medical Mission Personnel at their booth, or you may contact:

**WMM Placement Coordinator: Lauren McLemore – [LMcLemore@Samaritan.org](mailto:LMcLemore@Samaritan.org)**



**WORLD MEDICAL MISSION®**  
THE MEDICAL MINISTRY OF SAMARITAN'S PURSE



## **Harpur Memorial Hospital** **Menouf, Egypt**

***Mission:*** Sponsored by the Episcopal Church in Egypt

***Staffing Needs:*** General Surgeons, Anesthesiologists

***Location:*** Harpur Memorial is located in Menouf Egypt, 50 miles northwest of Cairo.

***Religion:*** Egypt is a Muslim country with strict rules about preaching the Gospel. Patients at the hospital who identify themselves as Christians (evangelical or orthodox) may be engaged in religious conversation at any time. Muslims may only be given answers to their direct questions.

***Profile:*** Harpur Memorial Hospital is a 76-bed facility offering a wide range of services including surgery, pediatrics, orthopedics, ENT, OB/GYN, urology, tropical medicine, diagnostic imaging, laboratory, and dentistry. In January, 2014 the hospital opened a surgical training program under the Pan-African Academy of Christian Surgeons (PAACS).

You may find World Medical Mission Personnel at their booth, or you may contact:

**WMM Placement Coordinator: Lauren McLemore – [LMcLemore@Samaritan.org](mailto:LMcLemore@Samaritan.org)**



## **Harpur Memorial Hospital** **Menouf, Egypt**

A 75-bed, full-service, Christian charity hospital that has served the community for more than 100 years. Last year it treated more than 130,000 outpatients and performed more than 2,000 major surgeries. The hospital is known for its excellent medical services, its compassionate service to rich and poor alike, and its love for Jesus Christ. The Hospital is a mission for the Anglican Church in Egypt.

### **The NEED:**

- **Short and long-term faculty members are always needed. They provide training for residents and leave for permanent faculty to get R&R.**
- **Prayers are needed for PAACS residents and staff.**
- **Financial resources are needed to train the residents as surgeons. The cost to train one PAACS resident is on average \$25K per year.**

For additional information, please go to [www.paacs.net](http://www.paacs.net) or you may also contact PAACS Chief Medical Officer for information on short-term and long-term faculty assignments at [keir.thelander@paacs.net](mailto:keir.thelander@paacs.net)



CURE's Medical Mission Opportunities differ across the network and focus on:

- Specialty Medical Surgeons (orthopedics, plastics)
- Anesthesiology
- RN, PT, OT
- Medical Student Elective Placements
- Resident & Fellow Placements

CURE Hospital locations and specializations are as follows:

- **Orthopedics:** Kenya
- **Orthopedics, Plastics & Reconstructive:** Zambia, Zimbabwe, Philippines, Malawi, Ethiopia, & Niger
- **Neurosurgery:**

Uganda Medical Mission

Opportunities:

- For more information on current volunteer opportunities, [cure.org/volunteer](https://cure.org/volunteer)
- Questions and general inquiries can be sent to [volunteer@cure.org](mailto:volunteer@cure.org)
- For information on current employment opportunities at CURE, visit [cure.org/jobs](https://cure.org/jobs).





**WORLD MEDICAL MISSION®**  
THE MEDICAL MINISTRY OF SAMARITAN'S PURSE



## **Myungsung Christian Medical Center** **Addis Ababa, Ethiopia**

**Mission:** Myungsung Presbyterian Church, Korea

**Staffing Needs:** Cardiology, Emergency Medicine, Family Practice, Gastroenterology, Hematology, Internal Medicine, Neonatology, Neurology, Neurosurgery, Ophthalmology, Oral Maxillofacial Surgery, Otolaryngology, Pathology, Pediatric Orthopedic Surgery, Physical Medicine & Rehab, Radiology, Rheumatology, Thoracic Surgery, Urology

**Location:** Myungsung Hospital is located in the southeastern part of Addis Ababa, the capital city of Ethiopia.

**Religion:** Islam and Orthodox Christianity are the primary religions

**Profile:** Myungsung Christian Medical Center compound consists of two wings; Shalom Wing with the capacity of 161 bed facility; (40) surgical, (25) medical, (20) pediatrics, seven OBGs, ten ER and (11) Intensive Care and Grace Wing with the capacity of 67 beds, as well as a separate Medical College with a 6 year curriculum including internship. MCM offers ophthalmologic, dental, plastic surgery, ENT, psychiatry and hemodialysis services as part of community health programs, in addition to general medicine, pediatrics and obstetrics & gynecology.

You may find World Medical Mission Personnel at their booth, or you may contact:

**WMM Placement Coordinator: Sandy Souto – [SSouto@Samaritan.org](mailto:SSouto@Samaritan.org)**





## **Soddo Christian Hospital** **Soddo, Ethiopia**

This year Soddo Christian Hospital, supported by American 501c3 St. Luke's Healthcare Foundation, will celebrate its 20<sup>th</sup> Anniversary after first opening January 2005. It was built to reintroduce a Christian mission hospital to the region following the takeover of a SIM Mission Hospital several decades prior. The hospital has grown tremendously over the past 20 years and now has nearly 190 beds and increasing spectrum of physicians and specialists. The HOPE Center, a large Women and Children's addition to the hospital, is currently under construction. The hospital specializes in surgical care and has PAACS training programs in General Surgery and Orthopedic Surgery, with plans to possibly open a residency program in Obstetrics and Gynecology in future years.

### **The NEED:**

- **Short- and long-term faculty members are always needed. Short-term volunteers are particularly essential in helping with the training of surgical residents and encouragement of long-term faculty and staff.**
- **Prayers are needed for PAACS residents and staff.**
- **Financial resources are needed to train the residents as surgeons. The cost to train one PAACS resident is on average \$25K per year.**

For additional information, please go to [www.paacs.net](http://www.paacs.net) or you may also contact PAACS Chief Medical Officer for information on short-term and long-term faculty assignments at [kier.thelander@paacs.net](mailto:kier.thelander@paacs.net)



**WORLD MEDICAL MISSION®**  
THE MEDICAL MINISTRY OF SAMARITAN'S PURSE



## **Soddo Christian Hospital** **Soddo, Ethiopia**

***Mission:*** Sponsored by the St. Luke's Healthcare Foundation, a non-profit organization based in Wheaton, IL.

***Staffing Needs:*** Dentistry, Dermatology, Emergency Medicine, Family Practice, Gastroenterology, General Surgery, Hematology, Internal Medicine, Neonatology, Nephrology, Neurology, Neurosurgery, Obstetrics/Gynecology, Ophthalmology, Oral Maxillofacial Surgery, Orthopedic Surgery, Otolaryngology, Pediatric Surgery, Pediatrics, Plastic Surgery, Radiology, Urology

***Location:*** Soddo Christian Hospital is 250 miles and approximately a six hour drive from Addis Ababa, the capital city. It is 7,000 feet in elevation.

***Religion:*** Islam and Orthodox Christianity are the primary religions. Protestants make up about 15% of the population. Muslims have targeted Ethiopia and this area specifically. The local area around Soddo is largely Protestant from evangelism by SIM missionaries many years ago.

***Profile:*** Soddo Christian hospital is a 120 bed facility with five wards (2) surgical, (1) maternity, (1) small ICU and (1) general/pediatrics. Current long term expatriate staff include (2) general surgeons, (1) orthopedic surgeon, (1) OBG, (1) pediatrician, (1) ER specialist and (1) geriatric specialist. There are currently (5) Ethiopian FPs and (5) African general surgery residents.

You may find World Medical Mission Personnel at their booth, or you may contact:

**WMM Placement Coordinator: Sandy Souto – [SSouto@Samaritan.org](mailto:SSouto@Samaritan.org)**



**WORLD MEDICAL MISSION®**  
THE MEDICAL MINISTRY OF SAMARITAN'S PURSE



## **Bongolo Hospital** **Lebamba, Gabon**

*Mission:* Christian and Missionary Alliance

*Staffing Needs:* Family Practice, General Surgery, Internal Medicine, Obstetrics/Gynecology, Ophthalmology, Orthopedic Surgery, Pediatrics

*Location:* Bongolo Hospital is located in a lush, rural area of Gabon

*Religion:* Christianity, Islam and traditional indigenous religious beliefs

*Profile:* Bongolo Hospital is a 158 bed hospital, (31) adult surgery, (29) adult medical, (26) Maternity w/ (8) isolettes, (26) eye clinic, (22) Peds (medical and surgical), (5) emergency room, (5) recovery room and (4) ICU. It presently serves one third of the country's population. In addition to medical care, the hospital also offers a three-year training course for nurses and midwives and a community health program. Morning staff Bible study is 7:30 am to 8:00 am and is conducted in French. Bongolo is a Pan-African Academy of Christian Surgeons or PAACS program participant. Short term volunteers in surgical specialties (also anesthesia and radiology) should understand that *teaching* and not doing cases is their primary goal.

You may find World Medical Mission Personnel at their booth, or you may contact:

**WMM Placement Coordinator: Abigail Dryden - [ADryden@Samaritan.org](mailto:ADryden@Samaritan.org)**



## **Bongolo Hospital** **Lebamba, Gabon**

Today, the 158-bed hospital in the rural town of Lebamba includes busy Surgery, Adult Medicine, Maternity, Pediatrics and Emergency departments, as well as one of the busiest eye-clinics in Gabon. Full- service HIV, TB, and Dental clinics round out the services.

### **The NEED:**

- **Short and long-term faculty members are always needed. They provide training for residents and leave for permanent faculty to get R&R.**
- **Prayers are needed for PAACS residents and staff.**
- **Financial resources are needed to train the residents as surgeons. The cost to train one PAACS resident is on average \$25K per year.**

For additional information, please go to [www.paacs.net](http://www.paacs.net) or you may also contact PAACS Chief Medical Officer for information on short-term and long-term faculty assignments at [keir.thelander@paacs.net](mailto:keir.thelander@paacs.net)





## **AGC Tenwek Hospital** **Bomet, Kenya**

A 400-bed hospital in southwestern Kenya. While it serves a population of about 800,000 for primary health care, it is a surgery referral center for the entire region of more than 8.5 million people. The hospital has six modern operating theatres in a new surgery and educational facility plus additional OB/GYN, ophthalmology and endoscopy theatres. Patients present with a broad array of pathology, and more than 5,000 operations are performed annually. With an extensive medical library including internet services; laparoscopy; research in esophageal cancer and other areas; diagnostic radiology including CT scan; intensive care facilities; laboratory and cytopathology departments; and physical therapy services, Tenwek is a state-of-the-art surgical training facility in Africa.

### **The NEED:**

- **Short and long-term faculty members are always needed. They provide training for residents and also provide leave for permanent faculty to get R&R.**
- **Prayers are needed for PAACS residents and staff.**
- **Financial resources are needed to train the residents as surgeons. The cost to train one PAACS resident is on average \$25K per year.**

For additional information, please go to [www.paacs.net](http://www.paacs.net) or you may also contact PAACS Chief Medical Officer for information on short-term and long-term faculty assignments at [kier.thelander@paacs.net](mailto:kier.thelander@paacs.net)



**WORLD MEDICAL MISSION®**  
THE MEDICAL MINISTRY OF SAMARITAN'S PURSE



## **Tenwek Hospital** **Bomet, Kenya**

**Mission:** World Gospel Mission (WGM)

**Staffing Needs:** Anesthesiology, Cardiology, Dentistry, Emergency Medicine, Family Practice, Gastroenterology, General Surgery, Internal Medicine, Neonatology, Obstetrics/Gynecology, Ophthalmology, Orthopedic Surgery, Pediatrics, Physical Medicine & Rehab, Plastic Surgery, Radiology, Urology

**Location:** Tenwek Hospital is located 225 miles northwest of Nairobi and 5 miles east of Bomet.

**Religion:** Today, the main Christian denominations in Kenya are Protestant, which make up 45% of the country's religious composition. The Roman Catholic Church represents 28% of the population. The Sunni path of Islam is the religion of approximately 10% of the Kenyan population.

**Profile:** Tenwek is a 300-bed hospital with a wide range of surgical, medical, maternity and pediatric services. Tenwek Hospital is one of the largest mission hospitals in Africa. It provides primary health care to 600,000 Kipsigis people within a 32 kilometer radius and serves as a referral center for a much larger region. General wards range from 6 to 17 beds each.

You may find World Medical Mission Personnel at their booth, or you may contact:

**WMM Placement Coordinator: Dayna Wright – [DWright@Samaritan.org](mailto:DWright@Samaritan.org)**

**WMM Placement Coordinator: Ashleigh Horn – [AHorn@Samaritan.org](mailto:AHorn@Samaritan.org)**





**WORLD MEDICAL MISSION®**  
THE MEDICAL MINISTRY OF SAMARITAN'S PURSE



## **Chogoria Hospital** **Chogoria, Kenya**

***Mission:*** Presbyterian Church of East Africa (PCEA)

***Staffing Needs:*** Family Practice, General Surgery, Internal Medicine, Obstetrics/Gynecology, Pediatrics

***Location:*** 3-4 Hours from Nairobi

***Religion:*** Although the area has a Presbyterian foundation, many other denominations can be found in and around Chogoria.

***Profile:*** Established in 1922 by Dr. Clive Irvine, a Scottish medical missionary, with a focus on preaching, healing, and teaching. In 1956, management of the hospital passed from the Church of Scotland to the Presbyterian Church of East Africa. It was rebuilt in the 1970's and presently the hospital has 295 beds and is the principal health care provider in Tharaka-Nithi District (with more than 45,000 people).

**[www.pceachogoriahospital.org](http://www.pceachogoriahospital.org)**

You may find World Medical Mission Personnel at their booth, or you may contact:

**WMM Placement Coordinator: Abigail Dryden – [ADryden@Samaritan.org](mailto:ADryden@Samaritan.org)**



**WORLD MEDICAL MISSION®**  
THE MEDICAL MINISTRY OF SAMARITAN'S PURSE



## **Kapsowar Hospital** **Kapsowar, Kenya**

***Mission:*** Africa Inland Mission (AIM)

***Staffing Needs:*** Anesthesiology, Dentistry, Emergency Medicine, Family Practice, General Surgery, Internal Medicine, Neonatology, Obstetrics/Gynecology, Orthopedic Surgery, Pediatrics, Urology

***Location:*** Kapsowar Hospital is located in a remote area of northwestern Kenya about 60 miles from the Uganda border. Specifically, it sits at the edge of a small village within the Marakwat District of the North Rift Valley Region.

***Religion:*** There is a high percentage of Christians in Kapsowar with many different denominations represented. The Africa Inland Church is the largest Protestant denomination in the area. There is also a large Catholic presence as well. In recent years, Muslims have made some inroads into Kapsowar.

***Profile:*** Kapsowar is a small, district-level hospital which provides the majority of medical care to this remote region of northwestern Kenya. The 126-bed, multi-building hospital provides facilities for maternity, pediatric, medical, and surgical care. Mobile maternal and child health clinics travel to three centers up to 90 km (56 miles) away. Four dispensaries provide simple health care for the local people. The hospital has approximately 4,000 inpatient admissions and 15,000 outpatient visits per year.

You may find World Medical Mission Personnel at their booth, or you may contact:

**WMM Placement Coordinator: Sandy Souto – [SSouto@Samaritan.org](mailto:SSouto@Samaritan.org)**



WORLD MEDICAL MISSION®

THE MEDICAL MINISTRY OF SAMARITAN'S PURSE



## **AIC-CURE International Children's Hospital** **Kijabe, Kenya**

*Mission:* Africa Inland Church (AIC) – CURE International

*Staffing Needs:* Orthopedic Surgery, Pediatric Orthopedic Surgery

*Location:* AIC-CURE is located about 60 km north of Nairobi. The altitude is 7200 feet up on the edge of an escarpment overlooking the Great Rift Valley which extends from the Sea of Galilee to Zimbabwe.

*Religion:* The population is primarily Christian (Protestant and Catholic), although some of the more remote tribes practice animism and spirit worship. Muslims and Hindus comprise a smaller portion of the religious community.

*Profile:* AIC-CURE Children's Hospital is one of the leading specialty hospitals in East Africa. AIC-CURE is a 30 bed, pediatric orthopedic hospital devoted to serving the physically disabled children of Kenya as well as training new Kenya Orthopedic surgeons. The Hospital originally opened in 1998 as AIC Bethany Crippled Children's Centre of Kenya.

You may find World Medical Mission Personnel at their booth, or you may contact:

**WMM Placement Coordinator: Lauren McLemore – [LMcLemore@Samaritan.org](mailto:LMcLemore@Samaritan.org)**



**WORLD MEDICAL MISSION®**  
THE MEDICAL MINISTRY OF SAMARITAN'S PURSE



## **Kijabe Hospital** **Kijabe, Kenya**

***Mission:*** Africa Inland Mission (AIM)/Africa Inland Church (AIC)

***Staffing Needs:*** Emergency Medicine, Family Practice, Gastroenterology, General Surgery, Internal Medicine, Neonatology, Neurosurgery, Obstetrics/Gynecology, Orthopedic Surgery, Pathology, Pediatric Surgery, Pediatrics, Plastic Surgery, Radiology, Thoracic Surgery, Urology

***Location:*** Kijabe Hospital is located about 60 km north of Nairobi. The altitude is 7200 feet up on the edge of an escarpment overlooking the Great Rift Valley which extends from the Sea of Galilee to Zimbabwe. It is approximately a 1 hour drive from Nairobi, the capital city.

***Religion:*** The population is primarily Christian (Protestant and Catholic), although some of the more remote tribes practice animism and spirit worship. Muslims and Hindus comprise a smaller portion of the religious community.

***Profile:*** Today, Kijabe Hospital is a non-profit, 340-bed hospital owned and operated by AIC of Kenya as part of a network of four hospitals and 45 dispensaries. The hospital offers a broad range of inpatient and outpatients curative services to people from the surrounding farming communities.

[www.kijabehospital.org](http://www.kijabehospital.org)  
[www.kijabehospital.org/blog](http://www.kijabehospital.org/blog)

You may find World Medical Mission Personnel at their booth, or you may contact:

**WMM Placement Coordinator: Lauren McLemore - [LMcLemore@Samaritan.org](mailto:LMcLemore@Samaritan.org)**





## **AIC Kijabe Hospital** **Kijabe, Kenya**

This hospital has been open since 1915 and in its present location since 1961. It is licensed for 300 beds presently. The hospital is currently equipped with 15 operating rooms, including a modern ICU, Dental, Laboratory, Pathology unit and an energy center responsible for generating the hospital oxygen supply and wall suction. Six PAACS training programs are based at Kijabe - the General Surgery Residency, Orthopedic Surgery Residency, Anesthesiology Residency, obstetrics and gynecology residency, Plastic Surgery Fellowship, and the Pediatric Surgery Fellowship. Bethany Kids at Kijabe Hospital is a semi-autonomous unit within the AIC Kijabe Hospital dedicated to the holistic care of children with various surgical conditions and disabilities.

### **The NEED:**

- **Short and long-term faculty members are always needed. They provide training for residents and also provide leave for permanent faculty to get R&R.**
- **Prayers are needed for PAACS residents and staff.**
- **Finance to build extra resident housing to fit all the programs.**
- **Financial resources are needed to train the residents as surgeons. The cost to train one PAACS resident is on average \$25K per year.**

For additional information, please go to [www.paacs.net](http://www.paacs.net) or you may also contact PAACS Chief Medical Officer for information on short-term and long-term faculty assignments at [keir.thelander@paacs.net](mailto:keir.thelander@paacs.net)



## **AIC Litein Hospital** **Litein, Kenya**

AIC Litein is a 220 bed hospital which opened in 2004.

### **The Need:**

- **Short and long-term faculty members are always needed. They provide training for residents and also provide leave for permanent faculty to get R&R.**
- **Prayers are needed for PAACS residents and staff.**
- **Financial resources are needed to train the residents as surgeons. The cost to train one PAACS resident is on average \$25K per year.**

For additional information, please go to [www.paacs.net](http://www.paacs.net) or you may also contact PAACS Chief Medical Officer for information on short-term and long-term faculty assignments at [keir.thelander@paacs.net](mailto:keir.thelander@paacs.net)





**WORLD MEDICAL MISSION®**

THE MEDICAL MINISTRY OF SAMARITAN'S PURSE



## **Litein Hospital – Kenya**

[www.litein-hospital.org](http://www.litein-hospital.org)

***Mission:*** Africa Inland Mission (AIM)/Africa Inland Church (AIC)

***Staffing Needs:*** Anesthesiology, Cardiology, Dermatology, Emergency Medicine, Family Practice, Gastroenterology, Internal Medicine, Neonatology, Obstetrics/Gynecology, Ophthalmology, Orthopedic Surgery, Pediatric Surgery, Pediatrics, Radiology, Urology

***Location:*** A.I.C Litein Hospital is located about 7000 feet above sea level. It is about 270 km from the City of Nairobi and 40 kilometers from Kericho County headquarters.

***Religion:*** The population is primarily Christian (Protestant and Catholic), although some of the more remote tribes practice animism and spirit worship. Muslims and Hindus comprise a smaller portion of the religious community.

***Profile:*** Litein provides primary and specialist care to a population of 800,000 people across six counties in the South Rift region of Kenya. The hospital has a total 220 beds and a 10 bed casualty. The community of about 450 medical and nonmedical staff is rich in spirit and passionate about providing quality healthcare. General Outpatient Services serves approximately 500 patients every day. On average 600 patients are admitted every month. They carry out close to 180 operations per month, 30 to 40 percent being minor operations including cataract surgery. They also conduct knee and hip replacements as well as general surgery.

You may find World Medical Mission Personnel at their booth, or you may contact:

**WMM Placement Coordinator: Abigail Dryden – [ADryden@Samaritan.org](mailto:ADryden@Samaritan.org)**



## **Brase Clinic & Vision Center** **Migori, Kenya**

### Basic information:

- Kenya Relief's Brase Clinic is a 6,000 square foot medical-surgical facility located in Migori, Kenya, just ten kilometers from the Tanzanian border.
- Over the past twenty years, more than 100,000 medical patients have been treated as well as an additional 7,000 surgeries performed.
- Twenty medical teams and more than 500 medical professionals serve with [KenyaRelief.org](http://KenyaRelief.org) on short-term missions per year.

### Staffing Needs:

Short Term: All medical positions especially Surgeons, ENT & General Circulators, Scrub Techs, OR/PACU Nurses, Pharmacists and Bio-Med

Long term: Medical Missionaries

Staffing Contact: [KenyaRelief.org](http://KenyaRelief.org), Office: 256-531-2535 – Milli Keel



**WORLD MEDICAL MISSION®**  
THE MEDICAL MINISTRY OF SAMARITAN'S PURSE



## **ELWA Hospital** **Monrovia, Liberia**

(Includes **Trinity Dental Clinic** on the hospital grounds.)

***Mission:*** SIM (Serving in Mission)

***Staffing Needs:*** Dentistry, Family Practice, General Surgery, Internal Medicine, Obstetrics/Gynecology, Oral Maxillofacial Surgery

***Location:*** ELWA Hospital is located 12 miles outside of the capital city of Monrovia, Liberia

***Religion:*** There are several different religions practiced throughout Liberia, including Christianity, Islam, Traditionalism, and Animism. Many people living in the Monrovia confess to be Christian, but blend traditionalism with Christianity. The Mandingo, Vai and Fulani in the area are nearly all Muslim.

***Profile:*** ELWA is a 50 bed facility: (8) male medical/surgical, (8) female medical/surgical, (9) pediatrics, (16) maternity, (2) semi-private, (3) adult private beds, and 4 short stay beds. The medical staff is led by a Liberian residency –trained surgeon. Other medical staff include (5) Liberian and other African physicians and (1) full-time and (1) part-time expatriate physician. The nursing, laboratory, midwife and surgery staff are Liberian.

<http://www.elwaministries.com/elwa-hospital-2/>

You may find World Medical Mission Personnel at their booth, or you may contact:

**WMM Placement Coordinator: Ashleigh Horn – [AHorn@Samaritan.org](mailto:AHorn@Samaritan.org)**



## **Hopitaly Vaovao Mahafaly** **Mandritsara, Madagascar**

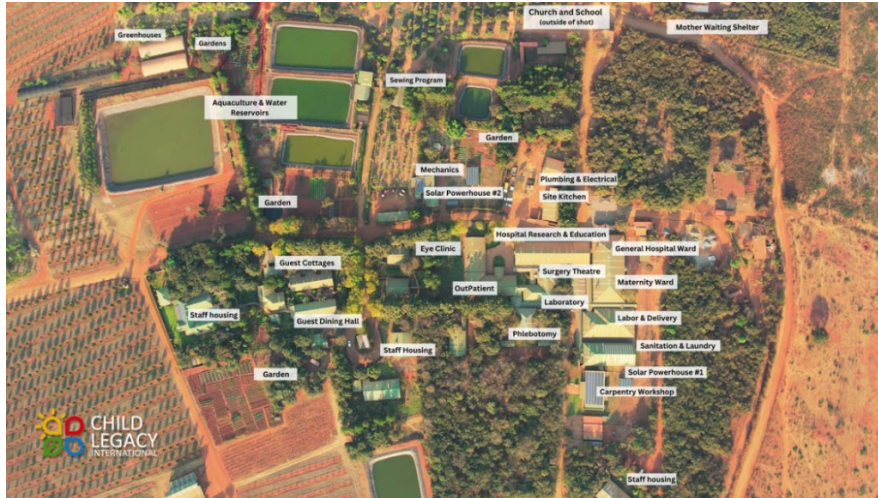
Hopitaly Vaovao Mahafaly is the only surgical hospital in the region it has 26 surgical beds, 22 medical beds, and 26 maternity beds.

### **The NEED:**

- **Short and long-term faculty members are always needed. They provide training for residents and also provide leave for permanent faculty to get R&R.**
- **Prayers are needed for PAACS residents and staff.**
- **Financial resources are needed to train the residents as surgeons. The cost to train one PAACS resident is on average \$25K per year.**

For additional information, please go to [www.paacs.net](http://www.paacs.net) or you may also contact PAACS Chief Medical Officer for information on short-term and long-term faculty assignments at [keir.thelander@paacs.net](mailto:keir.thelander@paacs.net)





## **Child Legacy Community Hospital** **Msundwe, Malawi**

Denominational Affiliation: Christian/Non-Denominational

Staffing Needs: Pediatric and OBGYN physicians for long-term placement (2-year terms) and all medical and dental physicians and nurses short-term mission trips.

Background of Hospital:

- Opened: June 2012
- Patients Treated: 640,000+

Healthcare Services Provided:

- Primary Healthcare Services
- Maternal Care: Maternity Services began September 2015
  - 12,000 + deliveries
  - 2,000+ C-sections
- Ophthalmic Care: Eye Clinic opened in August 2016
  - 100+Operations and 250+ other procedures annually
- Antiretroviral and Counseling
- Community Health Outreach
- Childhood Malnutrition Monitoring
- Radiology and Lab services

Email: [info@childlegacy.org](mailto:info@childlegacy.org) or michelle@[childlegacy.org](mailto:michelle@childlegacy.org)

Phone: (830)331-9428



## **Nkhoma Mission Hospital** **Nkhoma, Malawi**

Nkhoma Hospital functions as a District Hospital with responsibilities for the preventive and curative health care of a defined catchment population. The 280-bed hospital provides broad outpatient and inpatient services in surgery, obstetrics, paediatrics and adult medicine.

### **The NEED:**

- **Short and long-term faculty members are always needed. They provide training for residents and also provide leave for permanent faculty to get R&R.**
- **Prayers are needed for PAACS residents and staff.**
- **Financial resources are needed to train the residents as surgeons. The cost to train one PAACS resident is on average \$25K per year.**

For additional information, please go to [www.paacs.net](http://www.paacs.net) or you may also contact PAACS Chief Medical Officer for information on short-term and long-term faculty assignments at [keir.thelander@paacs.net](mailto:keir.thelander@paacs.net)





## **Malamulo SDA Hospital** **Thyolo District, Malawi**

A 212 bed Christian mission hospital in the rural location of Makwasa, in Southern Thyolo District of Malawi. The Malamulo Mission was founded in 1902. The hospital started as a clinic in 1915, then as a Leprosarium in 1925, and developed into a referral hospital by 1953. The hospital has an active Outpatient department along with Inpatient services including: Surgery, Adult Medicine, Maternity, Gynecology, Pediatrics, Radiology, and Laboratory. There is also a Women's Center for Cancer Screening, Community Department, Dental Clinic, several Satellite Clinics, and an HIV/AIDS Treatment Center.

### **The NEED:**

- **Short and long-term faculty members are always needed. They provide training for residents and also provide leave for permanent faculty to get R&R.**
- **Prayers are needed for PAACS residents and staff.**
- **Financial resources are needed to train the residents as surgeons. The cost to train one PAACS resident is on average \$25K per year.**

For additional information, please go to [www.paacs.net](http://www.paacs.net) or you may also contact PAACS Chief Medical Officer for information on short-term and long-term faculty assignments at [keir.thelander@paacs.net](mailto:keir.thelander@paacs.net)



## **SIM Galmi Hospital** **Galmi, Niger - West Africa**

Galmi is a 184-bed hospital, located in a remote but well-traveled area at the edge of the Sahara Desert. The hospital has a total staff of around 200, including 20 to 30 missionaries that live on the mission compound. Galmi has inpatient medical, obstetric, and surgical services and runs a PAACS General Surgery Training Program. The hospital has both high volume inpatient and outpatient services addressing especially acute emergent cases. The ministry also involves outreach to people groups with limited access to the gospel.

### **The NEED:**

- **Short and long-term faculty members are always needed (especially general surgeons, orthopedic surgeons, OB/GYNs, and pediatricians). They provide training for residents and also provide leave for permanent faculty to get R&R. Please pray for easy access for visas for short termers especially from the West at this time.**
- **Prayers are needed for PAACS residents and staff.**
- **Surgical supplies - as limited availability in country and limited access for sea containers coming through land borders since the coup in 2023**
- **Financial resources are needed to train the residents as surgeons. The cost to train one PAACS resident is on average \$25K per year.**

For additional information, please go to [www.paacs.net](http://www.paacs.net) or you may also contact PAACS Chief Medical Officer for information on short-term and long-term faculty assignments at [keir.thelander@paacs.net](mailto:keir.thelander@paacs.net)



**WORLD MEDICAL MISSION®**  
THE MEDICAL MINISTRY OF SAMARITAN'S PURSE



## **Galmi Hospital** **Galmi, Niger**

***Mission:*** Serving in Missions (SIM)

***Staffing Needs:*** Anesthesiology, Dentistry, Emergency Medicine, Family Practice, General Surgery, Hematology, Internal Medicine, Obstetrics/Gynecology, Orthopedic Surgery, Pediatric Surgery, Pediatrics, Physical Medicine & Rehab, Radiology, Urology

***Location:*** Galmi hospital is located in a remote but well-traveled area at the edge of the Sahara Desert in Galmi, Niger.

***Religion:*** 95% or more of the patients at Galmi are Muslim. Islamic beliefs are blended with traditional religious practices.

***Profile:*** Galmi is a 154 bed hospital, (49) surgical, (59) general medicine/pediatrics, (33) obstetric, (8) ICU and (5). The hospital also has a very busy outpatient department, with 200 to 500 people seen daily. The hospital also offers dental services, nutritional education and HIV/AIDS education and treatment.

**[www.galmi.org](http://www.galmi.org)**

You may find World Medical Mission Personnel at their booth, or you may contact:

**WMM Placement Coordinator: Sandy Souto – [SSouto@Samaritan.org](mailto:SSouto@Samaritan.org)**



# EGBE MEDICAL MISSION

## HEALTHCARE • TRAINING • MENTORING



### ECWA Hospital Egbe – Egbe, Kogi State, Nigeria

Founded in 1952, ECWA Hospital Egbe is a rural teaching hospital located on a 40-acre medical complex. The hospital's comprehensive facilities include men's, women's, children's, maternity, and isolation wards; two private rooms; two operating theaters; an emergency room; intensive care unit; laboratory; x-ray and ultrasound services; and a pharmacy. Additional specialized services are offered through an HIV & AIDS clinic, dental clinic, physiotherapy department, and an eye care center.

Beds: 110
Inpatient visits: 2,041
Outpatient visits: 18,739
Deliveries: 523
Surgeries: 1,089

Recent revitalization efforts have focused on aligning staff, medical equipment, systems, and practices with Christian ministry and sustainable business principles, toward transforming ECWA Hospital Egbe into a self-sustaining teaching hospital. Renowned throughout Nigeria for its integrity, medical excellence, high-quality training programs, and compassionate care, the hospital serves as a beacon of hope where the gospel is shared with every patient.

The hospital offers a Family Medicine Residency program and is home to the ECWA College of Nursing Sciences located on the same medical complex with academic and residential campuses. The College trains 400 nursing and midwifery students, further solidifying its role as a hub for medical training and community healthcare in rural Nigeria.

#### Long Term and Short-Term Opportunities:

Family Medicine, Internal Medicine, OB/GYN, Anesthetists, Nurse Educators, Nurse Specialties (RN, NP, Med-Surg, OR, Nurse Anesthetist, ER, ICU, Ped, L&D), IT and Administration, Construction/Maintenance

**Contact: Lisette Ruiz, Egbe Medical Mission Administrator** [lruiz@egbemission.org](mailto:lruiz@egbemission.org)

<https://www.egbemedicalmission.org>





## **ECWA Egbe Hospital** **Egbe, Nigeria**

*Mission:* Serving in Mission (SIM)

*Staffing Needs:* Anesthesiology, Dentistry, Gastroenterology, General Surgery, Ophthalmology

*Location:* Egbe Hospital is located in Egbe, Kogi State, Nigeria

*Religion:* Islam and Christianity

*Profile:* Founded in 1952 by SIM missionaries, it was later transferred to ECWA (Evangelical Winning ALL), the Nigerian mission agency affiliated with SIM. Egbe Hospital is a rural teaching hospital serving a large population in Kogi State. The hospital covers 33 acres with 68 buildings. Each year the hospital cares for 15,300 patients, performs 426 operations, delivers 288 babies, and conducts 17,000 x-rays and lab tests, while sharing the Gospel with all who come to the hospital.

[www.egbehospital.org](http://www.egbehospital.org)

You may find World Medical Mission Personnel at their booth, or you may contact:

**WMM Placement Coordinator: Kandi Burgess – [KBurgess@Samaritan.org](mailto:KBurgess@Samaritan.org)**



**WORLD MEDICAL MISSION®**  
THE MEDICAL MINISTRY OF SAMARITAN'S PURSE



## **Kibogora Hospital** **Nyamsheke District, Rwanda**

**Mission:** General Missionary Board, Free Methodist Church

**Staffing Needs:** Emergency Medicine, Family Practice, Gastroenterology, General Surgery, Internal Medicine, Obstetrics/Gynecology, Orthopedic Surgery, Pediatric Orthopedic Surgery, Pediatric Surgery, Pediatrics

**Location:** Kibogora Hospital is located 100 miles southwest from the capital city of Kigali overlooking the Lake Kivu and the Democratic Republic of the Congo. It is a five hour drive from the city of Kigali.

**Religion:** Christianity represents about 80% of the population. 10% are practicing traditional African religion and 10% are Muslim.

**Profile:** Kibogora Hospital is a 280 bed facility, (69) Post-surgery, (66) Pediatric/nutrition, (50) Internal Medicine, (38) Maternity, (24) Neonatal, (7) Emergency room, (12) Isolation, and (14) private rooms. Physician staff as of 2014 consists of 13 general practitioners. All are either Rwandan or Congolese. Most speak adequate English.

**[www.kibogora.org](http://www.kibogora.org)**

You may find World Medical Mission Personnel at their booth, or you may contact:

**WMM Placement Coordinator: Kandi Burgess – [KBurgess@Samaritan.org](mailto:KBurgess@Samaritan.org)**





Mission: Mercy Ships

Location: Toamasina, Madagascar

Timeframe: Now through December 2025

Staffing needs for the ***Africa Mercy*** hospital ship:

- Anesthesia (&Intensive Care) Supervisor (2-year commitment)
- Chief Medical Officer (2-year commitment)
- Clinical Dietician/Infant Feeding Coordinator (1-year and 10-month commitments)
- Hospital Director (2-year commitment)
- Hospital Executive Assistant (2-year commitment)
- Lead Crew Physician (2-year commitment)
- Operating Room Nurse General Team Leader (2-month commitment)
- Operating Room Nurse MaxFax Team Leader (2-month commitment)
- Operating Room Nurse (2-week commitment)
- Operating Room Nurse Orthopedic Team Leader (2-month commitment)
- Operating Room Nurse Pediatric Team Leader (2-month commitment)
- Operating Room Manager (2-year commitment)
- PACU Nurse Team Leader (10-month commitment)
- Preoperative Manager (2-year commitment)
- Preoperative Team Leader (2-year commitment)
- Senior Radiology Technologist (2-year commitment)
- Ward Nurse (Adult, Adult ICU, Pediatric, & PICU) (8-week commitment)

Profile: Mercy Ships uses hospital ships to serve Africa, providing safe and timely surgical intervention where it's needed most. During this period, the *Africa Mercy* will be docked in Durban, South Africa for a maintenance period and is seeking biomedical professionals to assist with the refitting of the hospital onboard.

<https://opportunities.mercyships.org/opportunities-listings/>

You may find Mercy Ships personnel at their booth, or you may contact: Callie Talamantez at

[callie.talamantez@mercyships.org](mailto:callie.talamantez@mercyships.org)



Mission: Mercy Ships

Location: Freetown, Sierra Leone

Timeframe: current through August 2025

Staffing needs for the **Global Mercy** hospital ship:

- Anesthesia (&Intensive Care) Supervisor (2-year commitment)
- Clinical Dietician/ Infant Feeding Coordinator (1-year and 10-month commitments)
- Hospital Director (2-year commitment)
- Hospital Executive Assistant (2-year commitment)
- Hospital Quality Manager (2-year commitment)
- Low Care Unit Team Leader (2-year commitment)
- Operating Room Clinical Supervisor (10-month commitment)
- Operating Room Educator (10-month commitment)
- Operating Room Nurse General Team Leader (2-month commitment)
- Operating Room Nurse MaxFax Team Leader (2-month commitment)
- Operating Room Nurse Reconstructive Plastic Team Leader (2-month commitment)
- Operating Room Nurse Ophthalmic Team Leader (2-month commitment)
- Operating Room Nurse Pediatric Team Leader (2-month commitment)
- Preoperative Team Leader (2-year commitment)
- Senior Biomedical Technician (2-year commitment)
- Senior Infection Preventionist (10-month commitment)
- Senior Medical Lab Technologist (2-year commitment)
- Senior Radiology Technologist (2-year commitment)
- Wound Care Coordinator (2-year commitment)

Profile: Mercy Ships uses hospital ships to serve Africa, providing safe and timely surgical intervention where it's needed most. The *Global Mercy* is equipped with 6 operating rooms, 102 acute care beds, and 7 ICU/isolation beds. The ship is also equipped with offices, crew cabins, dining room, laundry, etc.

<https://opportunities.mercyships.org/opportunities-listings/>

You may find Mercy Ships personnel at their booth, or you may contact: Callie Talamantez at

[callie.talamantez@mercyships.org](mailto:callie.talamantez@mercyships.org)



Mission: Mercy Ships

Location(s): Remote, Texas Headquarters, & Various Locations on the African Continent

Timeframe: Ongoing

Staffing Needs:

- Director of Monitoring, Evaluation, Learning & Development (MELD)
- Biomed Program Manager
- People Systems Administrator (Dayforce)
- Anesthesia Program Manager
- Project Manager – HRIS (Dayforce)
- Nursing Program Manager
- Senior People & Culture Business Partner
- Global Compensation & Benefits Manager
- Country Director (Multiple Locations in Africa)
- Operations Director (Multiple Locations in Africa)

Profile: Mercy Ships uses hospital ships to serve Africa, providing safe and timely surgical intervention where it's needed most. The staffing needs listed are permanent, salaried positions, based at the Mercy Ships Headquarters in Texas, USA (remote possible) and include 2-3 months of travel per year unless noted otherwise.

<https://www.mercyships.org/careers/>

You may find Mercy Ships personnel at their booth, or you may contact: Gabe Morris at [gabe.morris@mercyships.org](mailto:gabe.morris@mercyships.org)



## **Arusha Lutheran Medical Centre (ALMC)**

### **Arusha, Tanzania**

A one hundred bed hospital opened in 2008 to serve the growing medical needs. Together with its sister hospital, Selian Lutheran Hospital (SLH), there are over two hundred beds, seven operating theatres, and 550 staff.

#### **The NEED:**

- **Short and long-term faculty members are always needed. They provide training for residents and leave for permanent faculty to get R&R.**
- **Prayers are needed for PAACS residents and staff.**
- **Financial resources are needed to train the residents as surgeons. The cost to train one PAACS resident is on average \$25K per year.**

For additional information, please go to [www.paacs.net](http://www.paacs.net) or you may also contact PAACS Chief Medical Officer for information on short-term and long-term faculty assignments at [keir.thelander@paacs.net](mailto:keir.thelander@paacs.net)





**WORLD MEDICAL MISSION®**  
THE MEDICAL MINISTRY OF SAMARITAN'S PURSE



## **Hospital of Hope** **Mango, Togo**

***Mission:*** Association of Baptists for World Evangelism (ABWE)

***Staffing Needs:*** Anesthesiology, Dentistry, Emergency Medicine, Family Practice, Gastroenterology, General Surgery, Internal Medicine, Obstetrics/Gynecology, Orthopedic Surgery, Pediatrics

***Location:*** From Lomé, Togo, it is a 9 hour drive by missionary vehicle or taxi to the hospital.

***Religion:*** Islam 90%, Animism (mixed in), Catholicism 3-4%

***Profile:*** Hospital of Hope is located in the northern region of Togo, a country of over five million people. Opening in March 2015, Hospital of Hope is a 60-bed major medical, surgical and acute care facility, and regional trauma center. The bulk of the patients are Togolese, but many come from neighboring Ghana, Burkina Faso, and Benin.

**[www.abwe.org](http://www.abwe.org)**

**[hospitalofhopemango.org](http://hospitalofhopemango.org)**

You may find World Medical Mission Personnel at their booth, or you may contact:

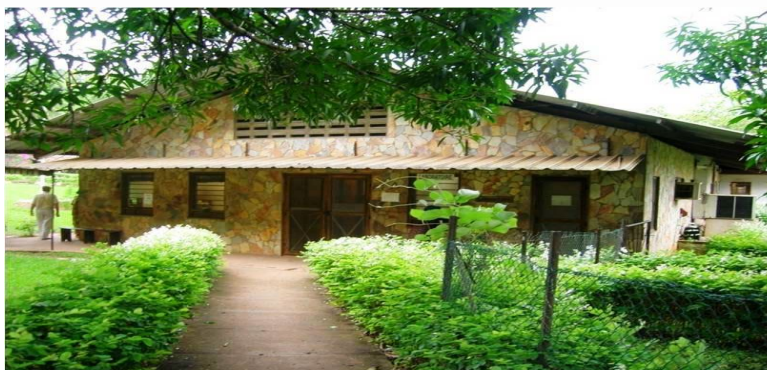
**WMM Placement Coordinator: Kandi Burgess – [KBurgess@Samaritan.org](mailto:KBurgess@Samaritan.org)**





**WORLD MEDICAL MISSION®**

THE MEDICAL MINISTRY OF SAMARITAN'S PURSE



## **Hôpital Baptiste Biblique – Tsiko, Togo**

[www.abwe.org](http://www.abwe.org)

**Mission:** Association of Baptists for World Evangelism (ABWE)

**Staffing Needs:** Anesthesiology, Colorectal Surgery, Dentistry, Emergency Medicine, Family Practice, Gastroenterology, General Surgery, Internal Medicine, Neonatology, Obstetrics/Gynecology, Ophthalmology, Orthopedic Surgery, Otolaryngology, Pediatric Surgery, Pediatrics, Plastic Surgery, Urology

**Location:** Located on 32 acres at the foot of the Danyi Plateau, Hôpital Baptiste Biblique is a 2 ½ hour drive, on a paved road, from the Capital of Lome, Togo.

**Religion:** The Togolese people are very receptive to the Gospel, but many remain faithful to their pagan ancestry. Many who claim to be Catholic, Protestant, or Muslim, still hold on to much of their animism. Over half of the population is involved in some form of animism or spiritism.

**Profile:** Hôpital Baptiste Biblique (HBB) or Karolyn Kempton Memorial Christian Hospital (KKMCH) is a 50-bed hospital which opened in 1985. There are 8 to 10 beds in each of the male and female wards, an 8 to 10 pediatric ward, a 4 bed ICU, an infection ward, and an 8-10 bed maternity with a four-bed delivery area. There is one isolation room and 2 private rooms, a triage area and a busy outpatient clinic with an average of 18,000 outpatient clinic visits per year.

You may find World Medical Mission Personnel at their booth, or you may contact:

**WMM Placement Coordinator: Kandi Burgess – [KBurgess@Samaritan.org](mailto:KBurgess@Samaritan.org)**



**WORLD MEDICAL MISSION®**  
THE MEDICAL MINISTRY OF SAMARITAN'S PURSE



## **Chitokoloki Mission Hospital** **Chitokoloki, Zambia**

*Mission:* Christian Missions in Many Lands

*Staffing Needs:* Dentistry, General Surgery

*Location:* Chitokoloki Hospital is located in the Northwest Province of Zambia on the Zambezi River.

*Religion:* The majority of Zambians practice some form of Christianity. Many of these have not totally forgotten their traditional roots and still hold many of these beliefs. Islam and Hinduism are also practiced.

*Profile:* Chitokoloki Mission Hospital is a 200 bed hospital that serves a patient population of 150,000. The hospital facility includes four large wards and three smaller wards including a 25 bed pediatrics ward and a 25 bed OBG ward. There is also a 7 bed ICU, an ER, pharmacy, kitchen and a laundry area.

You may find World Medical Mission Personnel at their booth, or you may contact:

**WMM Placement Coordinator: Abigail Dryden – [ADryden@Samaritan.org](mailto:ADryden@Samaritan.org)**



**WORLD MEDICAL MISSION®**  
THE MEDICAL MINISTRY OF SAMARITAN'S PURSE



## **Mukinge Hospital** **Kasempa, Zambia**

**Mission:** SIM (Serving In Mission)

**Staffing Needs:** Anesthesiology, Family Practice, General Surgery, Internal Medicine, Obstetrics/Gynecology, Pediatrics, Physical Medicine & Rehab

**Location:** Mukinge Hospital is located in the Kasempa and Mufumbwe districts in the Northwestern Province of Zambia. It is a two hour mission flight from Lusaka, the capital city.

**Religion:** The major religions of Zambia are Christianity, Indigenous beliefs, Hinduism and Islam. It is estimated that 25% of the population are Evangelical Christians.

**Profile:** Mukinge Hospital is a 200-bed referral facility that currently services 100,000 people. The hospital has seven inpatient wards, including an adult medical ward (male and female), an adult surgical ward (male & female), a pediatric surgical ward, a maternity ward (1,300 – 1,400 deliveries per year), a pediatric ward, an eye ward and a malnutrition ward. There is a busy outpatient department with 160 – 180 patients seen daily.

<http://www.samaritanspurse.org/medical/mission-hospitals-mukinge-hospital-kasempa-zambia>

You may find World Medical Mission Personnel at their booth, or you may contact:

**WMM Placement Coordinator: Abigail Dryden – [ADryden@Samaritan.org](mailto:ADryden@Samaritan.org)**



**WORLD MEDICAL MISSION®**  
THE MEDICAL MINISTRY OF SAMARITAN'S PURSE



## **Macha Mission Hospital** **Southern Province of Zambia**

*Mission:* Brethren in Christ Church in Zambia

*Staffing Needs:* Internal Medicine, General Surgery, Orthopedics, OB/GYN, Pediatrics, Pulmonary, CRNA

*Location:* Macha is approximately 40 miles due west of Choma on the Namwala Road in southern Zambia.

*Religion:* The majority of Zambians practice some form of Christianity. Many of these have not totally forgotten their traditional roots and still hold many of these beliefs, causing much confusion. Zambian Constitution in 1992 declared Zambia to be a Christian nation. Many are affiliated with churches like Evangelical Church of Zambia and the Christian Brethren (CMML), and Brethren in Christ Church, but some are associated with other groups, including Roman Catholicism. Islam and Hinduism are also practiced.

*Profile:* Macha is a 208-bed hospital with medical and surgical services. There are 2 adult wards (1 male, 1 female), 1 Pediatric ward, 1 TB ward, 1 OB ward with 1 delivery room and 30 beds. Zambian midwives conduct all routine deliveries of which there are about 3000 deliveries per year. There is an operating theater with 1 OR for major surgery and 2 minor surgery rooms. Many admissions are for HIV related illnesses. Other admissions are for common internal medicine diseases like heart failure, diabetes, stroke, and hypertension.

You may find World Medical Mission Personnel at their booth, or you may contact:

**WMM Placement Coordinator: Abigail Dryden – [ADryden@Samaritan.org](mailto:ADryden@Samaritan.org)**





**WORLD MEDICAL MISSION®**  
THE MEDICAL MINISTRY OF SAMARITAN'S PURSE



## **Karanda Mission Hospital** **Mt. Darwin, Zimbabwe**

***Mission:*** The Evangelical Alliance Mission (TEAM)

***Staffing Needs:*** Anesthesiology, Emergency Medicine, Family Practice, General Surgery, Internal Medicine, Orthopedic Surgery, Physical Medicine & Rehab, Urology

***Location:*** Karanda Mission Hospital is located about 125 miles north of Harare.

***Religion:*** It is estimated that between 60 and 70 percent of Zimbabweans belong to mainstream Christian denominations such as the Roman Catholic, Anglican, and Methodist Churches; however, over the years a variety of indigenous churches and groups have emerged from these mainstream denominations. While the country is overwhelmingly Christian, the majority of the population continues to believe, to varying degrees, in indigenous religions such as ancestor worship.

***Profile:*** Located in Mt. Darwin, Zimbabwe, Karanda is run by three American and Canadian physicians and one American Physician's Assistant. It is a 134 bed hospital and typically stays about 90% full. Zimbabwe will not license DO's.

**[www.karanda.org](http://www.karanda.org)**

You may find World Medical Mission Personnel at their booth, or you may contact:

**WMM Placement Coordinator: Ashleigh Horn – [AHorn@Samaritan.org](mailto:AHorn@Samaritan.org)**



